

CCC, CE

Push Button Switch

LA39-F series

QUISURE

Keep quick, Make sure

ISO9001:2015

QUALITY GUARANTEED

Product Introduction

LA39-F series Pushbutton have the complete specifications and types. They have the round, square and rectangular actuator shapes if categorized according to the actuator shape, and have the normal pushbuttons and illuminated pushbuttons etc. if categorized according to the type.

LA39-F series Pushbuttons have good visual appearance, clear and transparent LED light beams as well as unique and reliable internal structure, which can better satisfy the users' requirements for miniaturized and intensive control of the panel.

The products comply with IEC 60947-5-1 and GB Code 14048.5.

Applicable Range

LA39-F series Pushbuttons are applicable to auxiliary applications for control signal and interlock etc. in various fields such as AC50Hz (60Hz) Voltage AC/DC 220V program controlled devices, electronic and electric appliance control circuits, machinery, telecommunications, medical devices and instruments etc.



Technical Parameters

Work Temperature	-25°C ~ +55°C	
Work Humidity	45~85%RH	
Contact Resistance	≤ 50mΩ	
Insulation Resistance	≥ 100MΩ	
Rated Impulse Withstand Voltage Uimp	2000V AC	
Mechanical Endurance	Normal pushbutton, illuminated pushbutton	200,000 times (1,200 times/hour)
	Maintained pushbuttons	100,000 times (1,200 times/hour)
Electrical Life	AC-15	100,000 times (300 times/hour)
	DC-13	50,000 times (300 times/hour)
Head Protection Class	IP40	
Action Travel	1.4~2.4mm	

QuiSure - Your Electrical Partner

Bring China's leading electrical products to the world.

RFQ: rfq@quisure.com

Support: support@quisure.com

Website: <https://quisure.com>

CCC, CE

Push Button Switch

LA39-F series



Contact Capacity

Rated Insulation Voltage U_i		250V		
Conventional Thermal Current I_{th}		5A		
Application Category	Rated Work Voltage U_e	24V	110V	220V
AC-15	Rated Work Current I_e	2A	1A	0.5A
DC-13		0.7A	0.2A	0.1A

Model and Meanings

LA39-F □□□ / □□

	LED Light Bead						
Voltage Code	Voltage	DC 6V		DC 12V		DC 24V	
	Code	21		22		23	
Color Code	External resistance	240Ω	1/2W	560Ω	1W	1.3KΩ 1W	
		red	green	yellow	blue	white	black
Actuator Shape		r	g	y	b	w	k
		Round if no symbol		square	rectangular		
Operation Shape				F	J		
		Normal pushbuttons if no symbol		illuminated pushbuttons	Self-locking buttons		
Number of Contacts				D	T		
		One normally open and one normally closed			Two normally open and two normally closed		
Installation outer diameter of the pushbutton is Ø12mm		11			22		
		The pushbutton serial number is issued by Shanghai Electrical Apparatus Research Institute					
	The pushbutton code is issued by Shanghai Electrical Apparatus Research Institute						

Description: LA39-F series Pushbuttons are quite small. To ensure the light brightness and service life of this series of illuminated pushbuttons, the user shall connect in series choke resistance externally to the product (provided by us). Refer to the voltage class code table in the model and its meanings of this page for the parameters of choke resistance.

Structural Features

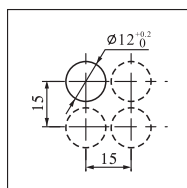
1. The structural parts are connected by the advanced maintained form, safe, reliable and easy for assembling and disassembling.
2. The contact has applied the changeover form of Momentary mechanism, easy for operation and quick with reliable contact.
3. They are made of the globally quality metal and plastic with the advanced precision manufacturing and fabricating processes to ensure that the product precision and quality reach the design requirements.
4. The contact is made of quality silver alloy with reliable connection and break and quite long service life.
5. The actuators of the indicators and illuminated pushbuttons are colorful with gentle and bright light beams. There are a variety of colors such as red, green, yellow, blue and white for users' options.
6. The various types of marks or signs (symbols, letters and characters etc.) can be provided according to the requirements of the users' operation instructions.

Contact Forms

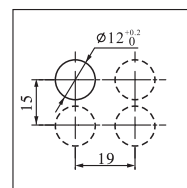
1 NO and 1NC	Arrangement of Wiring Terminals
2 NO and 2NC	Arrangement of Wiring Terminals

Installation Hole Sizes

Round and Square Actuator Hole



Rectangular Actuator Hole









Precautions:

1. Wiring: the terminals are welded within 20W/5 seconds or 260 C /3 seconds without external force on the terminals. During the welding, the soldering iron shall not contact the enclosure. During the wiring, the stress shall not be applied on the terminals, neither bending or lifting the terminals, nor applying external force on the terminals.
2. For the Maintained pushbuttons, ensure that the pushbutton is in the release position before the replacement of the components. The internal mechanism may be damaged when the pushbutton that is in the lock position is replaced!
3. The Pushbuttons must be hand operated. It is prohibited to use any other tool for operation!

CCC, CE Push Button Switch

LA39-F series



Name	Type	Work Status	Contacts	Model	Color	Lamp Voltage	Appearance dimension
Pushbutton (Round)		Momentary	11	LA39-F11/□	red-r green-g yellow-y blue-b white-w		
			22	LA39-F22/□			
		Maintained	11	LA39-F11T/□			
			22	LA39-F22T/□			
Pushbutton (Square)		Momentary	11	LA39-F11F/□			
			22	LA39-F22F/□			
		Maintained	11	LA39-F11TF/□			
			22	LA39-F22TF/□			
Illuminated pushbutton (Round)		Momentary	11	LA39-F11J/□			
			22	LA39-F22J/□			
		Maintained	11	LA39-F11TJ/□			
			22	LA39-F22TJ/□			
Illuminated Pushbutton (Square)		Momentary	11	LA39-F11D/□■	red-r green-g yellow-y blue-b white-w	21-DC 6V 22-DC 12V 23-DC 24V	
			22	LA39-F22D/□■			
		Maintained	11	LA39-F11TD/□■			
			22	LA39-F22TD/□■			
Buttons with light (Square)		Momentary	11	LA39-F11DF/□■			
			22	LA39-F22DF/□■			
		Maintained	11	LA39-F11TDF/□■			
			22	LA39-F22TDF/□■			
Illuminated Pushbutton (Rectangular)		Momentary	11	LA39-F11DJ/□■			
			22	LA39-F22DJ/□■			
		Maintained	11	LA39-F11TDJ/□■			
			22	LA39-F22TDJ/□■			

Description:

"□" in the column of model is indicated with color, "■" is indicated with the voltage class code.

LA39-F series Pushbuttons are quite small. To ensure the light brightness and service life of this series of illuminated pushbuttons, the user shall connect in series the choke resistance externally to the products (provided by us).